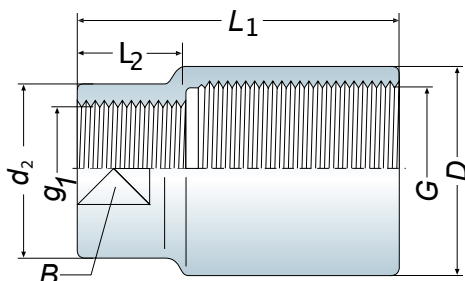




Reduziermuffen Reduced Coupling

mit zylindrischem Whitworth-Rohrgewinde nach DIN / ISO 228



Edelstahl

Gewinde Kurzzeichen		Außendurchmesser		Gesamtlänge		Stückgewicht kg
G	g ₁	D	d ₂	L ₁	L ₂	
1/4"	1/8"	19,0	14,0	26	12	0,017
3/8"	1/8"	26,0	19,0	30	17	0,049
	1/4"	21,0	18,0	26	16	0,049
1/2"	1/8"	28,0	17,0	32	20	0,048
	1/4"	27,5	20,0	34	23	0,063
	3/8"	27,5	22,0	34	20	0,065
3/4"	1/4"	33,5	22,0	38	20	0,072
	3/8"	33,5	22,0	38	20	0,092
	1/2"	33,5	27,5	40	24	0,080
1"	1/4"	41,0	22,0	44	20	0,104
	3/8"	41,0	22,0	44	20	0,086
	1/2"	41,0	27,5	44	24	0,116
	3/4"	41,0	34,0	44	30	0,112
1 1/4"	3/8"	50,0	22,0	44	20	0,189
	1/2"	50,0	27,5	50	24	0,187
	3/4"	50,0	34,0	50	30	0,200
	1"	50,0	41,0	52	36	0,200
1 1/2"	1/2"	56,0	34,0	53	30	0,235
	3/4"	56,0	34,0	53	30	0,306
	1"	56,0	41,0	53	36	0,221
	1 1/4"	56,0	50,0	53	46	0,221
2"	1/2"	70,0	28	51	32	0,353
	3/4"	68,0	32	52	32	0,251
	1"	70,0	41	58	36	0,329
	1 1/4"	70,0	49	58	30	0,442
	1 1/2"	70,0	56	58	31	0,368
2 1/2"	1"	85,0	43,0	56	34	0,378
	1 1/4"	85,0	43	56	34	0,555
	1 1/2"	85,0	59	66	36	0,555
	2"	85,0	69	61	39	0,556
3"	1 1/4"	100,0	61	64	40	0,833
	1 1/2"	100,0	61	64	40	0,833
	2"	100,0	73	67	41	0,869
	2 1/2"	100,0	83	66	39	1,204
4"	2"	131,0	72	67	39	1,549
	2 1/2"	133,0	90	84	49	2,025
	3"	130,0	102	77	44	1,432